

On Approach

An e-Newsletter for Our General Aviation Customers, Partners and Friends

Second Edition 2011 // CMH • LCK • TZR



QUICK LINKS

- » [NBAA's Piccione Highlight of General Aviation Networking Event](#)
- » [Young Eagles at Bolton Field, Youth Aviation Adventure at Spirit Avionics Introduce Youth to Aviation](#)
- » [10R/28L Runway Update](#)
- » [New Customs Clearance Protocol Set](#)
- » [Share With a Colleague](#)
- » [Content Is King!](#)



NBAA's Piccione Highlight of General Aviation Networking Event

More than 50 General Aviation (GA) business leaders, supporters, and GA friends from Port Columbus International, Rickenbacker International and Bolton Field airports gathered recently to network, discuss industry issues and hear a compelling presentation by Lisa Piccione, Senior Vice President, Government Affairs for the National Business Aviation Association (NBAA).



The diverse group of attendees representing many segments of the regional GA community enjoyed the opportunity to meet in an informal, professional setting. This second GA networking event hosted by the Columbus Regional Airport Authority (CRAA) was highlighted with the keynote address by Ms. Piccione who spoke about the contributions GA makes to our national, regional and local economies. The engaging presentation touched on some of the challenges facing the GA community and the positive impact that individuals can have on government policies directly affecting this important aviation industry component.

"We value the contributions that all of our GA business partners make to each of the airports we operate," said David Whitaker, Vice President of Business Development & Communications for the Authority. "Hosting a GA-focused forum is one way the Authority continues to engage with our vital GA business partners."



Young Eagles at Bolton Field, Youth Aviation Adventure at Spirit Avionics Introduce Youth to Aviation



The Airport Authority is happy to partner with several organizations each summer that focus on exciting activities that introduce local youth to aviation. Bolton Field was one of several GA airports utilized by Chapter 9 of the Experimental Aircraft Association (EAA) to host its Young Eagles Flight Experience. In July, 90 Columbus area youth took advantage of the unique and exciting opportunity at Bolton to fly for free and learn about aviation.

Launched in 1992 the EAA Young Eagles program provides interested young people ages 8 - 17 an opportunity to go flying in a general aviation airplane. These free flights are made possible through the generosity of EAA member volunteers. Since 1992, more than 1.6 million Young Eagles in 90 countries have enjoyed a flight with more than 42,000 volunteer pilots at the controls. The EAA9 local chapter has been actively engaged in the program for many years. For more information about Young Eagles, visit www.young eagles.org.

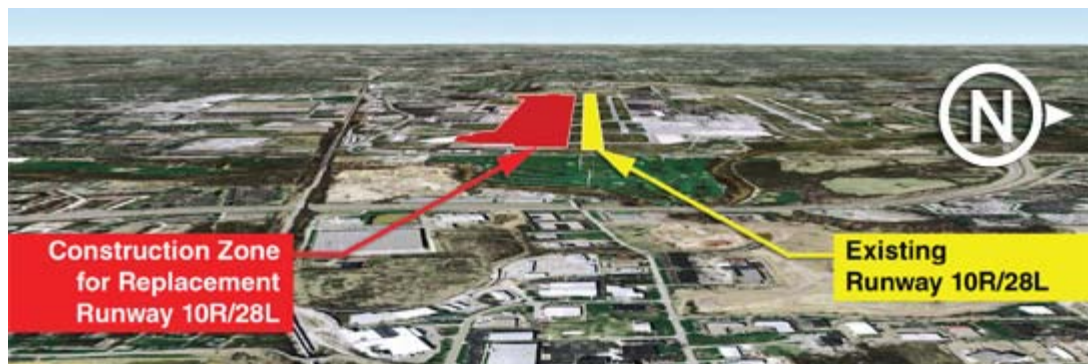
Another great activity occurred at Port Columbus in late August when Spirit Avionics hosted Youth Aviation Adventure's (YAA) annual fundraising event. This signature YAA event raises money to support the organization's mission to introduce young people to the exciting world of aviation. The benefit affair included a dinner, a static aircraft display and silent auction.

"We're happy to help YAA with their efforts to bring aviation to a new generation," said Rick Ochs, President of Spirit Avionics.

Lane Aviation also sponsored the event that earned over \$6,000 for YAA. Learn more about YAA's program at www.youthaviationadventure.org.



10R/28L Runway Update



Do not mistake the pavement under construction for the active runway. Check NOTAMs for construction related changes and closures.

The 10R/28L Runway Relocation Project at Port Columbus International Airport is well under way with sections of new Taxiway B already completed and in use. The new runway, while still under construction, is beginning to take shape and remains on schedule for a summer 2013 commissioning.

As work progresses with this important project, please be aware that recently completed sections of the new runway should not be confused with or mistaken for the active runway 10R/28L. A lighted "X" has been placed on the east end of the runway under construction to further differentiate it from the active/open runway 10R/28L, which is located 702 feet to the north of the construction zone. Aviation charts and publications are updated to reflect this construction activity.

Please share this information, including the picture (above) with all of your flight crews, dispatchers, chief pilots and others who would benefit from this safety information. If you have any questions, please contact the CMH Airport Operations at (614) 239-4003.



New Customs Clearance Protocol Set

Leaders from CRAA met recently with GA stakeholders and officials from local, regional and national offices of the Department of Homeland Security's Customs & Border Protection (CBP) unit to discuss procedure options for GA aircraft clearing international arrivals at Port Columbus International Airport (CMH). Since early 2009, GA aircraft have had to clear at the CBP facility adjacent to airline gate C46.

While GA operators support a strong homeland security posture, the procedure posed several challenges for safe, efficient and secure clearing of GA aircraft compared to the previous protocol.



After reviewing these challenges, the group worked to craft an option that provides the required level of safety and security while offering a more efficient means for GA aircraft arriving from international points to clear the CBP process. The revised protocol, which is followed by many airports with conditions and physical facilities similar to CMH, has been welcomed by both based and transient GA operators.

For more information about the new protocol, contact Landmark Aviation at (614) 238-3900 or Lane Aviation at (614) 237-3747.



Share With a Colleague

Do you know another professional who would enjoy reading *On Approach*? Feel free to forward this edition to them so they can use this [link](#) to subscribe and receive their own copy.



Content Is King!

Do you have a great GA story regarding Port Columbus International, Rickenbacker International, Bolton Field, or the industry in general? Stories, content ideas and feedback about *On Approach* may be sent to Mark Mulchaey, Manager, Customer Service & General Aviation Business Development at MMulchaey@ColumbusAirports.com.



COLUMBUS REGIONAL AIRPORT AUTHORITY
PORT COLUMBUS • RICKENBACKER • BOLTON